



NATIONAL CENTER for  
INTERPROFESSIONAL  
PRACTICE and EDUCATION

## IPEC Spring Institute

Interprofessional Education: Building a Framework for Collaboration

May 3, 2017

# Interprofessional Practice and Education: So where are we now?

Barbara F. Brandt, PhD, Director  
Associate Vice President for Education

# Topics

- **The National Center today**
- **Minding the gap of current environment**
- **Shaping our future agenda**
- **Tools you can use**



# Learning Partner Acknowledgement

Many thanks to all of our advisors, program participants, Nexus Innovation Network, funders, and many stakeholders from whom we learn every day.

## Special thanks:

National Advisory Council

Nexus Learning System Advisory Committee

American Interprofessional Health Collaborative

Angela Willson, National Center Education & Training Manager

“Conversation Café” Champions



# Interprofessional Education and Collaborative Practice

## The “New IPE” – Interprofessional Practice and Education

**Interprofessional education** “occurs when two or more professions learn with, about, and from each other to enable effective collaboration and improve health outcomes.”

**Interprofessional, collaborative practice** “occurs when multiple health workers **and students and residents** from different professional backgrounds provide comprehensive health services by working with patients, their families, carers (caregivers), and communities to deliver the highest quality of care across settings.”

*Adapted from:*

*The Centre for the Advancement of Interprofessional Education, UK, 1987*

*World Health Organization, Framework for Action on Interprofessional Education and Collaborative Practice, 2010.*



# What We Value: National Center Vision

We believe high-functioning teams can improve the experience, outcomes and costs of health care.

National Center for Interprofessional Practice and Education is studying and advancing the way stakeholders in health work and learn together.

## ***National Center Funders***

Health Resources and Services Administration Cooperative Agreement  
Award No. UE5HP25067

Robert Wood Johnson Foundation

Gordon and Betty Moore Foundation

Josiah Macy Jr. Foundation

John A. Hartford Foundation



# What We Value: National Center Vision

We believe **high-functioning teams** can improve the experience, outcomes and costs of health care.

National Center for Interprofessional Practice and Education is studying and **advancing the way stakeholders in health work and learn together.**

## ***National Center Funders***

Health Resources and Services Administration Cooperative Agreement  
Award No. UE5HP25067

Robert Wood Johnson Foundation

Gordon and Betty Moore Foundation

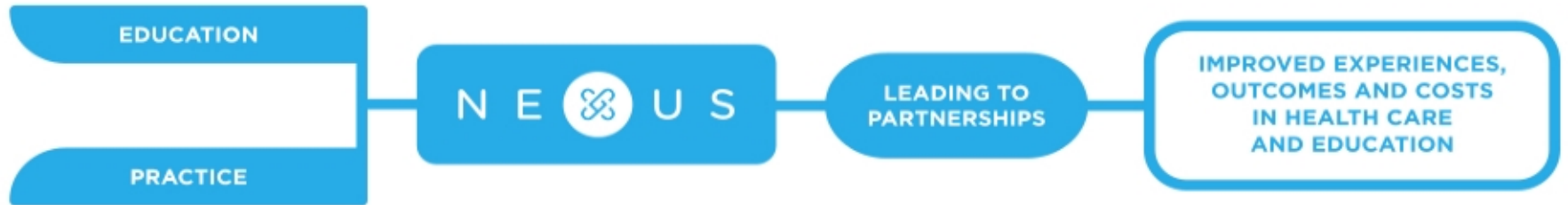
Josiah Macy Jr. Foundation

John A. Hartford Foundation



# The Nexus: Our Vision for Health

nexusipe.org



## Triple Aim of Alignment

Improving quality of experience for patients, families, communities and learners

Sharing responsibility for achieving health outcomes and improved learning

Reducing cost and adding value in health care delivery and education



# HRSA Principles

*June 1, 2012 Funding Opportunity Announcement*

A coordinating center for interprofessional education and collaborative practice will provide **leadership, scholarship, evidence, coordination, and national visibility** to advance interprofessional education and practice as a viable and efficient health care delivery model. (p.4)

“Unbiased, neutral convener”





# The Nexus Focus

## Learner Pipeline

*Today I owe:*



## Health Workforce for New Models of Care

How do we create a health workforce in the right locations, specialties and practice settings that has the skills and competencies needed to meet the demands of a transformed health care system while preventing burnout?



## Patients, Families & Communities

How do we improve the patient experience of care, improve the health of populations, and reduce the per capita cost of health care simultaneously?



# Unbiased, Neutral Convener: “Calling the circle”

- Convenes groups and tees up “thorny IPE issues” topics for discussion and recommendations
- Works inter- and intra-professionally to promote dialogue and understanding
- Cannot favor one profession over the other
- Cannot advocate for one model over the other
- Collects data and information to make sense while striving to be objective



# Unbiased, Neutral Convener: “Calling the circle”

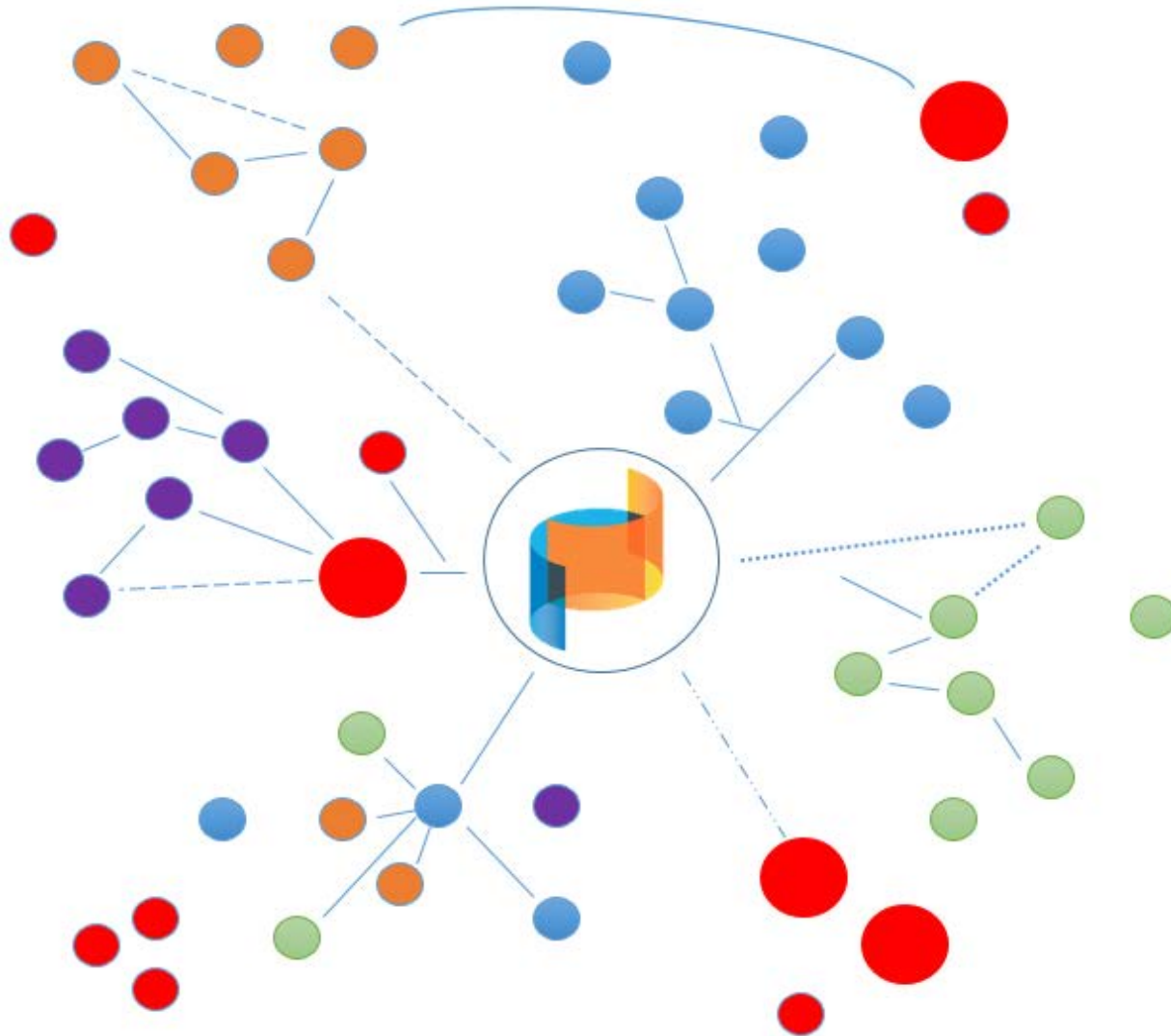
- Advances thinking about the field based upon evidence, experience and expertise
- Based upon evolving models of IPE, identifies partners to educate and train in specialized areas
- Advocates for our values, based upon what we are learning makes a difference
- Says what needs to be said. . .



# Satellite and Big Blue Marble

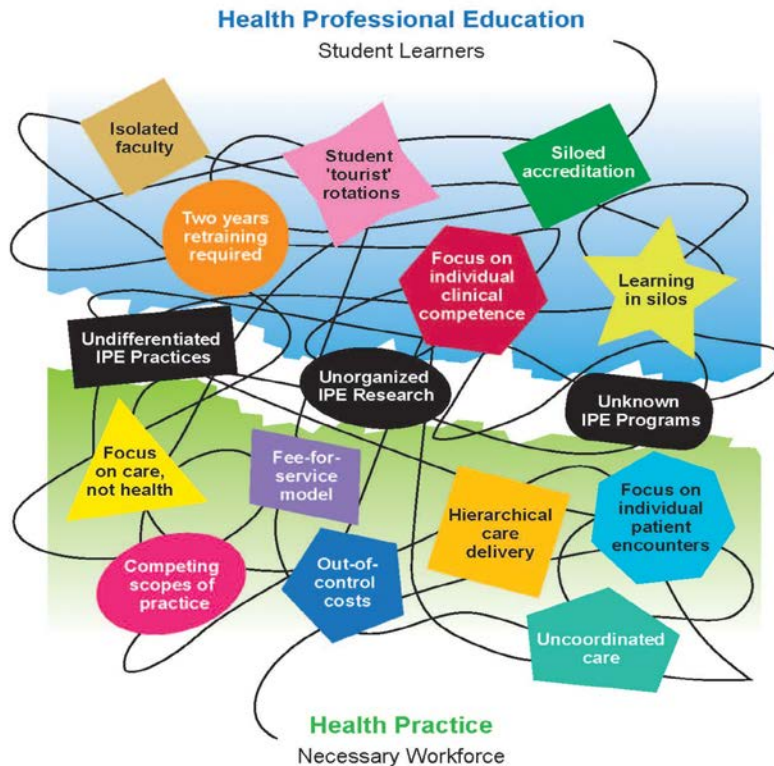


# View from the Satellite: Interconnection of Organizations



# Changing Views – 2013 and Today

2013 View from the Balcony



2017 View from the Satellite





# Minding the Gap

## Articulating our Values in Today's Environment

ACA / "Obamacare," CMMI, PCORI



?? Repeal and replace

National / Federal



State-based decision-making

Workforce redesign:  
Physician-led teams



Workforce redesign:  
Team Optimization at lower cost  
(The how- not the who- at lower cost;  
"right team at the right time" -  
outcomes)

Teams as health professionals



Accountable care communities:  
multi-sector involvement in health

(Consumer-driven) Care



Consumer-driven health



# Minding the Gap

## Articulating our Values in Today's Environment

Gaps: education and practice



Gaps: intra-professional and inter-professional

Trusting professionals



Questioning the "Grand Bargain"

Fee-for-service



Value-based payments

Continuing education model



Performance-based competency model

Silent Generation and Baby Boomers



Gen X, Millennials and Gen Z

Clinical professions



Population health (engagement of Public Health)

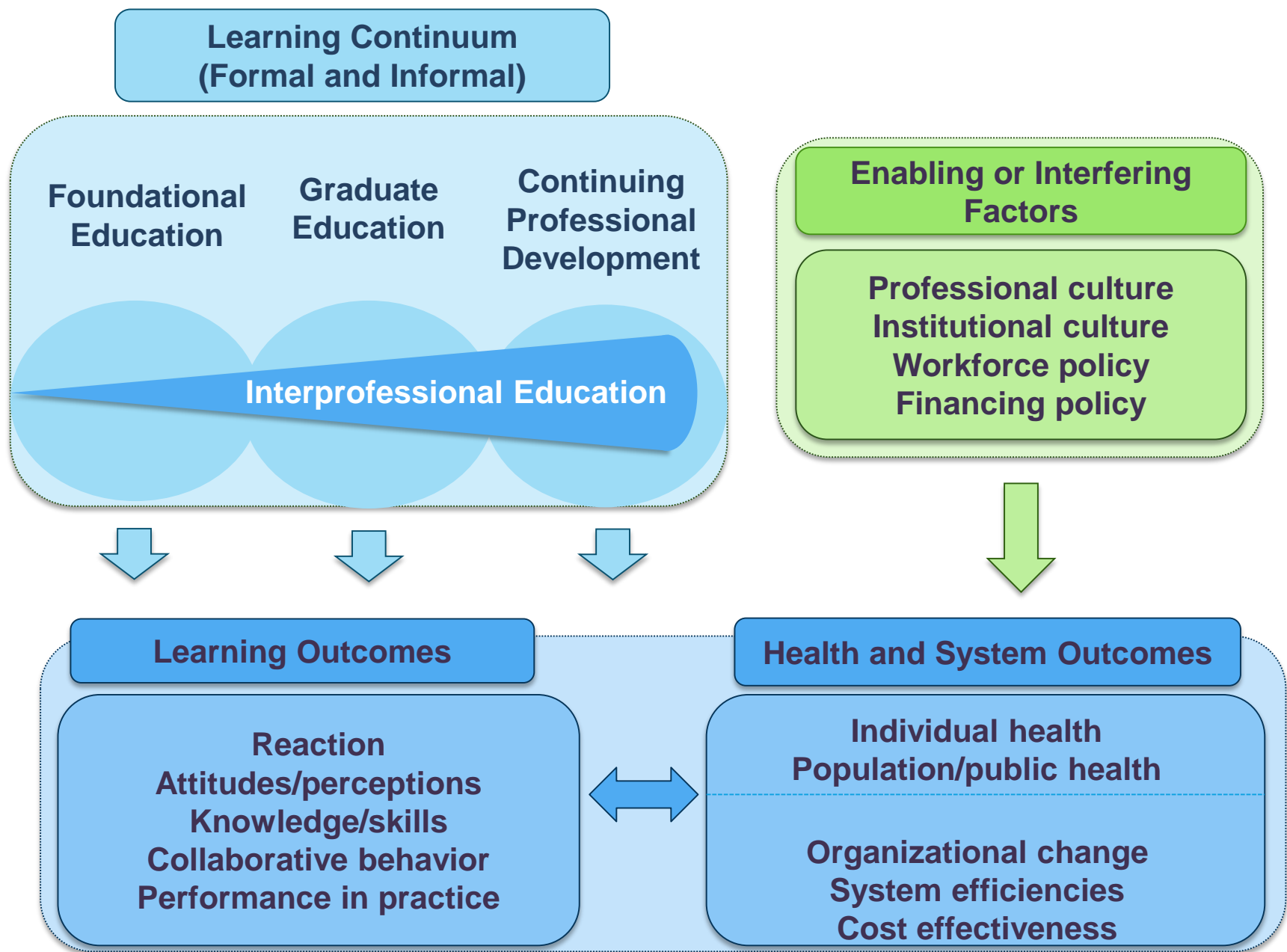




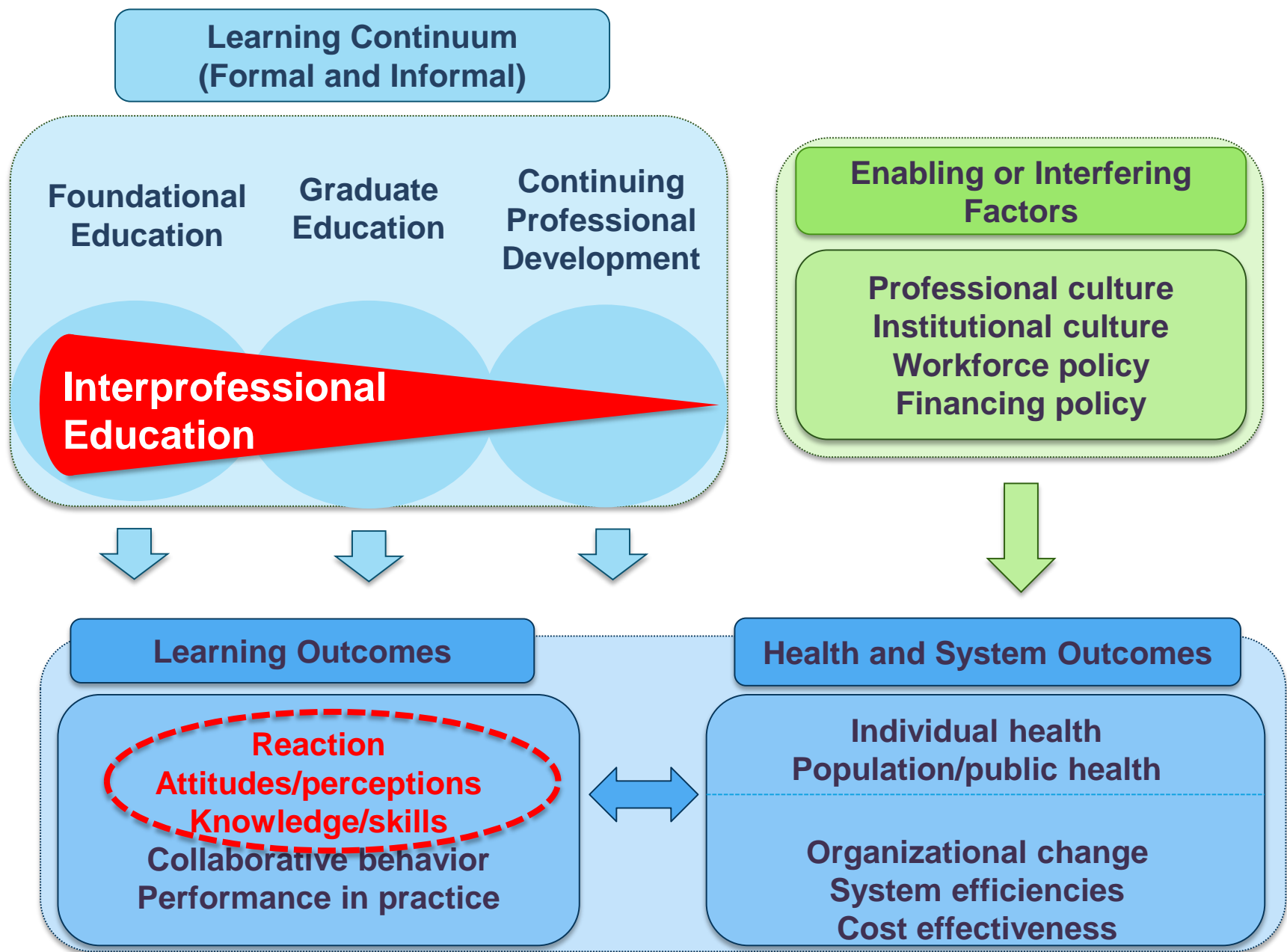
# “True North”: What Does it Mean?

- Commitment to interprofessional teams
- Value-based payment models
- “Consumer-driven” health care





Source: Figure 3.2 in: IOM (Institute of Medicine). 2015. *Measuring the Impact of Interprofessional Education on Collaborative Practice and Patient Outcomes*. Washington, DC: The National Academies Press.



Source: Figure 3.2 in: IOM (Institute of Medicine). 2015. *Measuring the Impact of Interprofessional Education on Collaborative Practice and Patient Outcomes*. Washington, DC: The National Academies Press.

# What We've Learned: Emerging Critical Success Factors



Process of care redesign is about changing culture.



Compelling vision is required.



IP+E resourcing is critical.



Senior leadership is essential.



Impressions of team training effectiveness are mixed.



# The National Center: What's in it for you?



### Thought Leadership

**Strategic Imperative:** Develop a network of trusted affiliates and ambassadors on the “balcony”

- 196 presentations to: ed. institutions, acad. and prof. associations, certification boards, accreditors, govt/public health/policy/research, and health care delivery systems
- 10 formal advisory board roles
- Hundreds of strategic consultations to support the multisector advancement of IPE

### Education and Training

**Strategic Imperative:** Utilize cutting-edge knowledge through data, experience, and expertise to create an innovative Nexus Learning System to share the latest learning and tools

- Annual Nexus Summit
- Nexus Learning System – New Models of Care Require New Models of Learning
- Strategic Program Partners
- Individualized Faculty Development and Technical Assistance
- Joint IPCE Accreditation

### Knowledge Generation

**Strategic Imperative:** Facilitate evidence-based research approaches to inform practice and learning in real time using standardized processes and scholarly dissemination

- Nexus Innovations Network
- Robust cohort of Nexus sites demonstrating innovation in IPE implementation
- Special Issue of Journal of Interprofessional Care
- Growing Portfolio of Published, Peer-Reviewed Research

## Strategic Focus Areas

### Resource Center

**Strategic Imperative:** Leverage institutional and community expertise in a robust framework to serve the end-user in the vanguard of IPE in practice

- Community-Sourced, Open-Access Resources and Learning Modules
- Practical Guides for Assessing Team Performance
- Relaunched Measurement Instrument Collection
- Amina and Carl in the Nexus



# Nexusipe.org



## INFORMING

Browse resources and stories and learn about us and the Nexus.



## CONNECTING

View the member directory, scan resource collections and join a group discussion.



## ENGAGING

Find an educational opportunity and the latest IPE events.



## ADVANCING

Learn about work occurring at sites across the U.S. and read our latest research.

Join the discussion



Resources



Create a profile

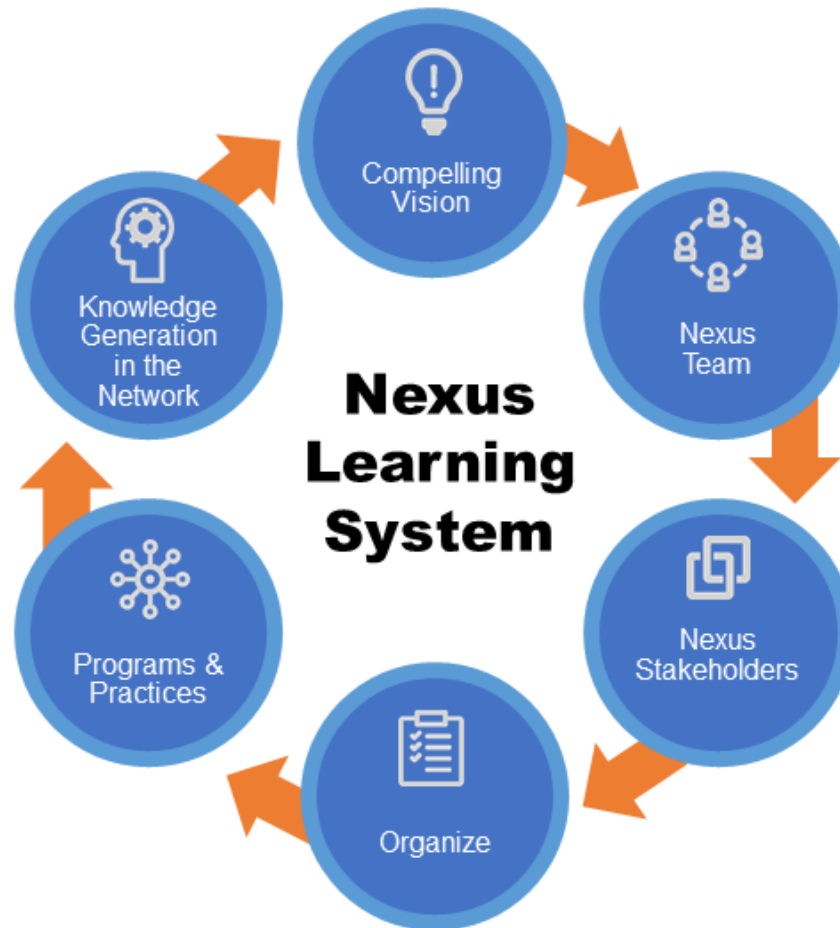


# Sessions by Country – April 2016-2017





# Nexus Learning System



# Results: Annual Nexus Summit

## 2016 Summit

August 21-23  
Hilton Minneapolis

Convened by the National Center for Interprofessional Practice and Education  
& co-hosted by the American Interprofessional Health Collaborative



Learning Together at the Nexus:  
**National Center Summit on the Future of IPE**

2016

## 2017 Summit

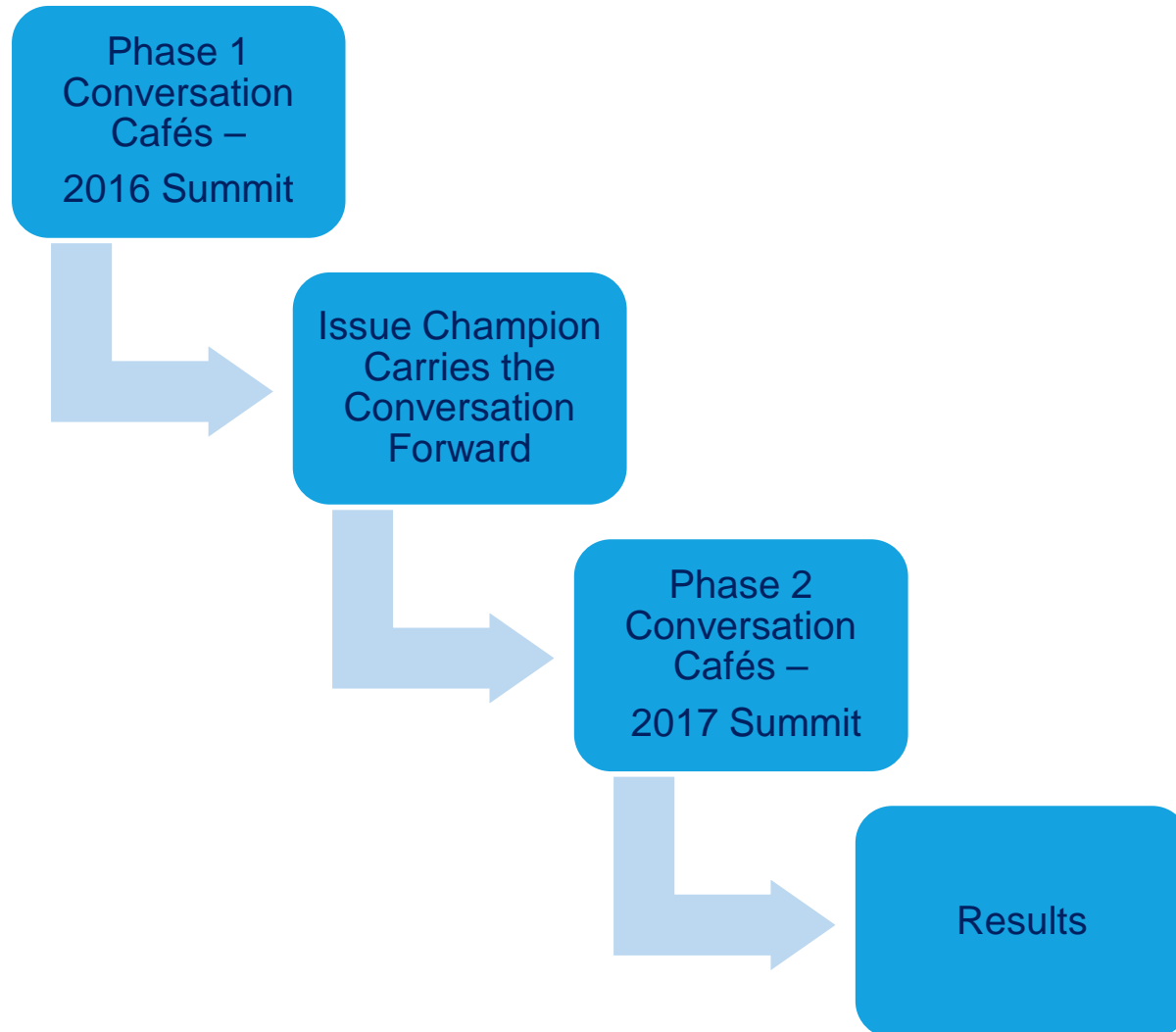
**Learning Together at the Nexus:  
Provocative Ideas for Practical IPE**



THE NEXUS  
SUMMIT

AUGUST 20-23, 2017, MINNEAPOLIS

# Conversation Cafés: Identifying and Hearing Burning IPE Issues Carry Forward for Results-Oriented Work



# Phase 1 (2016) and Phase 2 (2017) Conversations Cafés

- **Phase I to Phase II: Accreditation**
  - Focusing on new accreditation standards for IPE in pre-professional programs and interprofessional professional development, what criteria should be used to judge quality to promote new models of learning?
- **Phase I to Phase II: The BIG Question**
  - How do we help students, trainees, and practitioners gain the competencies to work in new models of care when we are still practicing in traditional models?
- **Phase I to Phase II: Organizational Models of IPE**
  - What organizational models for aligning IPE and health care delivery will advance IPE most effectively and efficiently?
- **Phase I (2017): Team Optimization**
  - What are the opportunities and unintended consequences of team optimization?
  - What are the learning and education issues?



# Phase I Cafe recommendations: Accreditation

- IPE is a recommendation that tends not to be effectively enforced.
- Different professions have different standards.
- Assessing IPE is challenging: Lack of clarity about what constitutes evidence of achievement of a standard.
- IPE needs to be purposefully incorporated into the curriculum.
- The IPE experience needs to be formalized.
- Outcomes need to be clearer.



# Accreditation Conversation Café - Advancing the Dialogue in a 12 month cycle

August 2016



September 2016

Health Professions Accreditors Collaborative (HPAC) to Expand Membership

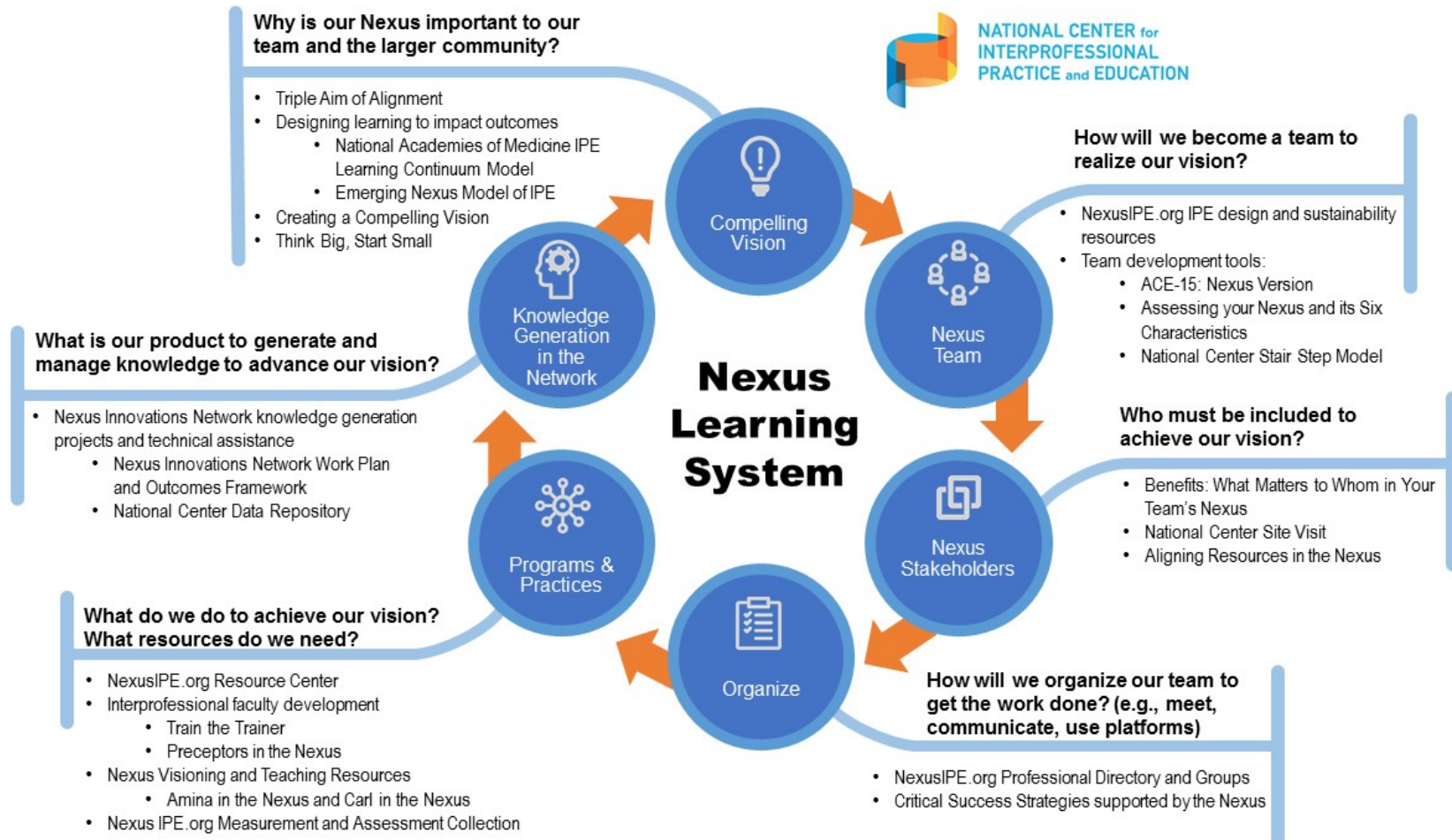
April 2017

During April 2017 ASPA convening, 23 accreditors signed on to work on a white paper about agreement on criteria for IPE

August 2017



# Nexus Learning System: New Models Institute





# Resource Center: Freely Available Institutional and Community Expertise

## Lessons from the Field: Promising Interprofessional Collaboration Practices

Resource Type: Report 

This Robert Wood Johnson Foundation report profiles the experiences of more than 20 hospitals and community health centers that utilize interprofessional collaboration to achieve better patient outcomes. The report, "Lessons From the Field: Promising Interprofessional Collaboration Practices," helps health care entities assess the potential benefits of interprofessional collaboration and offers a road map to implementing the approach.

The report details the experiences of health care organizations in advancing cooperation among physicians, nurses, nutritionists, psychologists, and other appropriate health professionals, from the planning stages through various phases of a patient's treatment. The patient and the patient's family are also considered part of the treatment team.

Approaches to establish a culture that embraces interprofessional collaboration include:

- Promote a culture that "puts patients first";
- Demonstrate leadership commitment to collaboration among the various professions as an organizational priority;
- Create a level playing field among the varying professions, ensuring that each is valued to the full extent of their license;
- Use shared language and tools to promote effective communication across disciplines; and
- Train the different disciplines together.

 3,903  345  0  0

SHARE     



## LESSONS FROM THE FIELD Promising Interprofessional Collaboration Practices

A Project of the Robert Wood Johnson Foundation

   0:05 / 8:59    

### Lessons from the Field: Promising Interprofessional Collaboration Practices



NexusIPE

 0

2,050 views

 Add to  Share  More





# Resource Center: Freely Available Institutional and Community Expertise

**NATIONAL CENTER for INTERPROFESSIONAL PRACTICE and EDUCATION**

Search  [LOG IN/REGISTER](#)


[Informing](#) [Connecting](#) [Engaging](#) [Advancing](#)

Engaging · Learning System · Amina in the Nexus

## NEXUS LEARNING SYSTEM

### Amina in the Nexus

Submitted by National Center... on Aug 24, 2015 - 3:54pm CDT



*Amina in the Nexus* shares the National Center for Interprofessional Practice and Education's vision for health care delivery in the United States. Through Amina's story, individuals see the potential of the Nexus to align health care redesign and interprofessional education to achieve the Triple Aim of improving the patient experience of care, improving the health of populations and reducing the per capita cost of health care. The video and supporting resources are teaching tools with applicability for a variety of audiences, including health professionals, health system and higher education leaders, faculty, students and community members.

The National Center is pleased to offer you – our partners – this collection of free, online resources about Amina to help you share the idea of IPECP more broadly. Please let us know if you have feedback on these items or suggestions for additional content. Our goal

4,476 65 0 1

Amina is striving to manage her diabetes and maintain her health.

She plays a key role on her 'care and learning team.'

0:13 / 5:24

### Amina in the Nexus captioned video

National Center for Interprofessional Practice and Ed...

17

1,963 views

# Resource Center: Freely Available Institutional and Community Expertise



NATIONAL CENTER for  
INTERPROFESSIONAL  
PRACTICE and EDUCATION

## Carl in the Nexus

0:07 / 5:32



3:19 / 5:32

## Carl in the Nexus

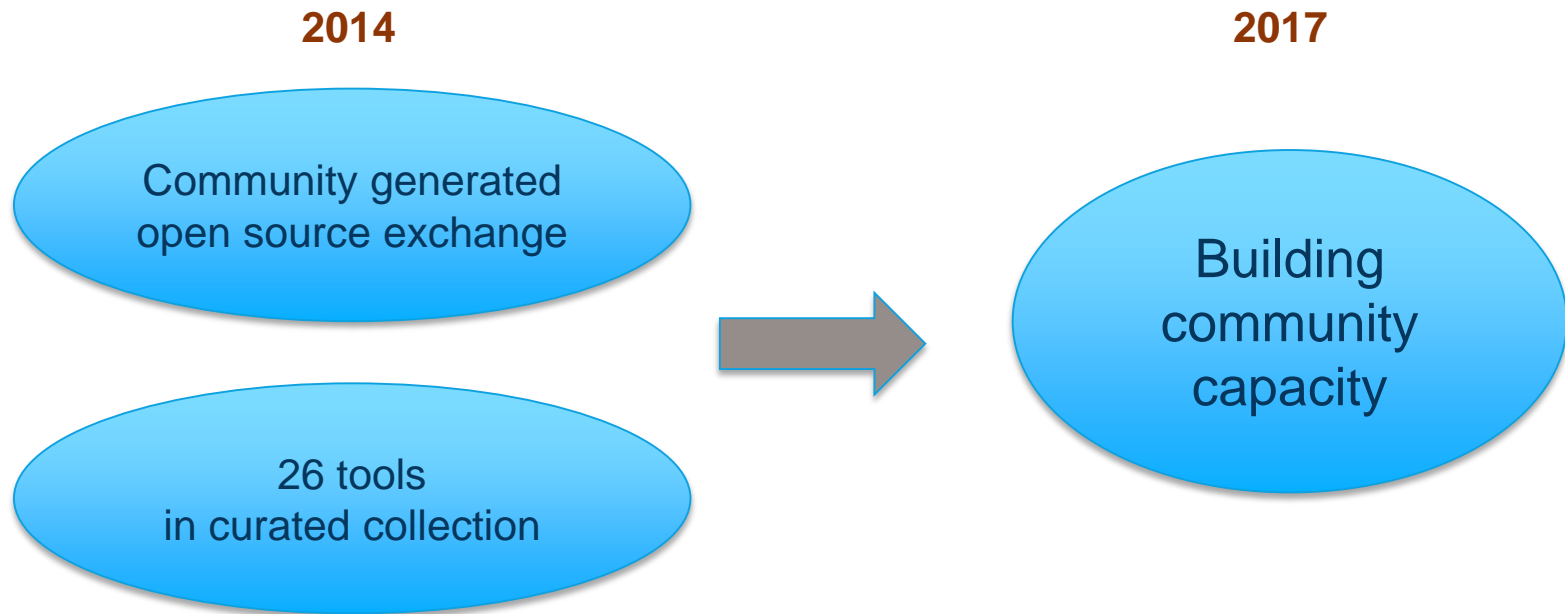
### Carl in the Nexus

*Facilitator Guide*



# Number One Request: “Assessment”

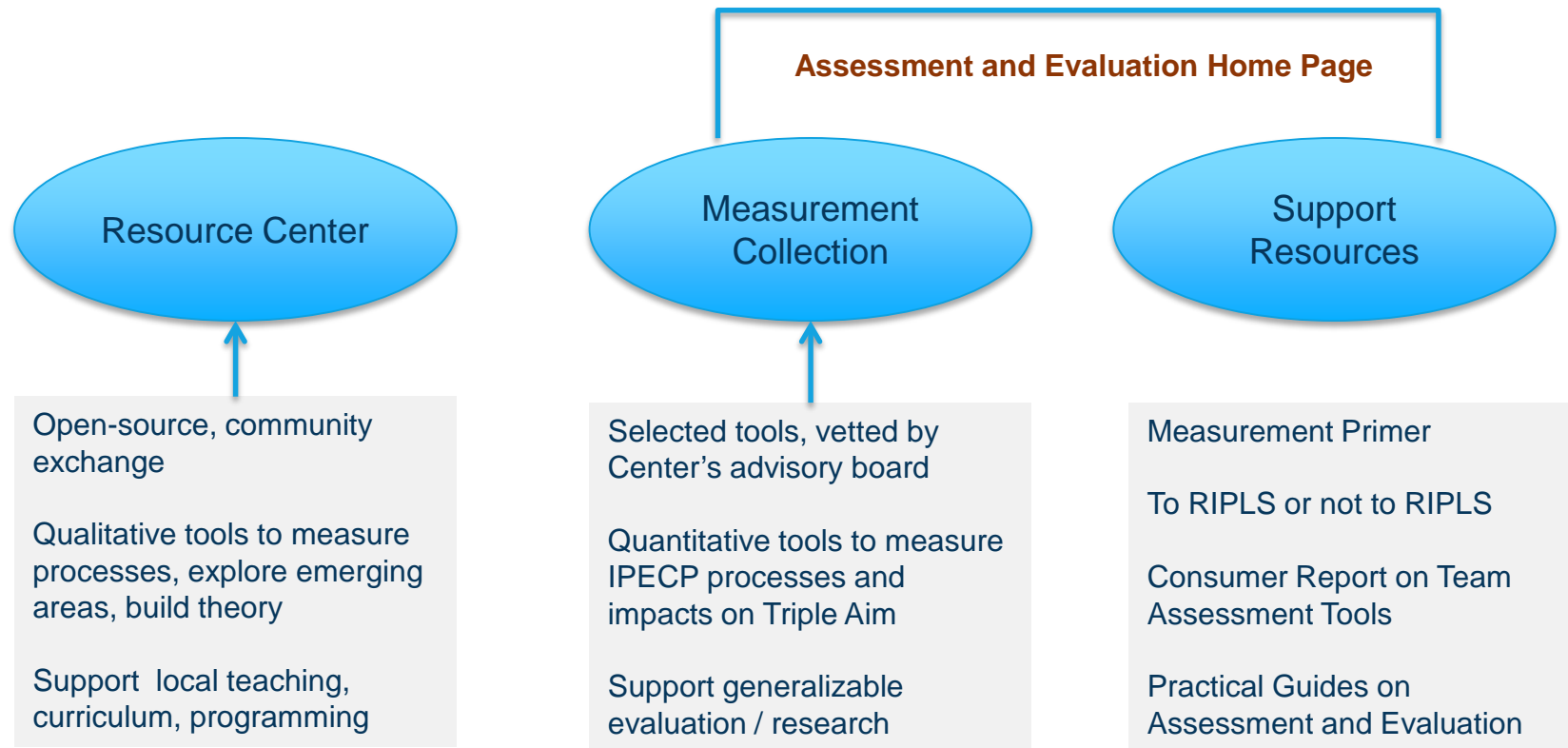
- Evolution of the measurement collection
- Importance of research on linkages between education, practice, and Triple Aim (cost, quality, patient experience)



# Today: Building Capacity in Foundation Areas\*

## Nexusipe.org

\*Measurement, assessment, evaluation



# Resource Center: Freely Available Institutional and Community Expertise

## Assessment & Evaluation

Our mission is to promote best practices in assessment and evaluation within the interprofessional education and collaborative practice communities.

This site is a gateway to measurement tools and other resources that can help you assess individuals, teams, or work environments and evaluate the impact of interprofessional education and collaborative practice on Triple Aim Outcomes.



## Webinar Recording Now Available

What Should I Consider When Selecting a Measurement Tool?



Practical Guides: Moving Theory into Effective Action



To RIPLS or Not to RIPLS: That is Only Part of the Question



Consumer Reporting Tools



SEARCH FOR MEASUREMENT TOOLS



BROWSE ALL TOOLS

## ASSESSMENT AND EVALUATION

This is your gateway to finding measurement tools that can be used to assess individual learners, groups, teams, practice environments, and organizations; and to evaluate the impact of interprofessional education programs and collaborative practice on Triple Aim Outcomes.

Search for tools

type here to search

Reset

SORT BY [RECENTLY ADDED](#) [MOST COMMENTS](#) [MOST POPULAR](#) [TITLE](#)

Showing 1 - 10 of 47

### Interprofessional Socialization and Valuing Scale (ISVS-21)

The ISVS-21 represents a refinement of a previous tool (ISVS-24, King et al., 2010); both are self-report instruments designed to measure interprofessional socialization among students and health practitioners and their readiness to function in interprofessional teams. Items were developed to capture respondent beliefs, attitudes, and behaviors at baseline and at post-intervention time periods. The original ISVS has been used in multiple studies. The purpose of the study reported here was to...

King, G. | Orchard, C. | Khalili, H. | Avery, L.

### Students Perceptions of Interprofessional Clinical Education Revised (SPICE-R)

The SPICE-R is a short (10-item) self-report survey designed to measure health professions students' perceptions of interprofessional education and interprofessional collaborative practice. It represents a variation of an earlier instrument (SPICE-1), which was developed specifically for medical and pharmacy students. Items reflect a 3-factor model capturing interprofessional teamwork and team-based practice; roles and responsibilities for collaborative practice; and patient outcomes from...

Domínguez, D.G. | Fike, D.S. | MacLaughlin, E.J. | Zorek, J.A.

### Performance Assessment Communication and Teamwork Tools Set (PACT)

The PACT Tool set was designed by faculty and staff at the University of Washington (Center for Health Sciences, Interprofessional Education, Research, and Practice), as part of a Macy and Hearst Foundations grant to develop a simulation-based team training program for pre-licensure health

### Refine by

#### Who is being assessed/evaluated?

- Teams (23)
- Individuals (21)
- Organizations (10)
- Informal groups, networks, colleagues (5)

#### Instrument type

- Self-report (e.g., survey, questionnaire, self-rating) (35)
- Observer-based (e.g., rubric, rating tool, 360 degree feedback) (15)
- Recording template (e.g., chart audit) (1)

#### Instrument content

- Reported perceptions, experiences of working relationships, teamwork (20)
- Behaviors / skills (19)
- Attitudes, values, beliefs regarding IPE, IPCP, professions (10)
- Organizational environment, culture (7)
- Patient / client health status (4)

Show more

#### Access

- Open access (available on this website) (30)
- Subscription (can be viewed in journal article) (10)

# Resource Center: Freely Available Institutional and Community Expertise

## RESOURCE CENTER

### Involving Team Members in Primary Care Practice

Resource Type: Other 

This interactive eLearning module is part of a series on team decision-making in primary care. It uses a patient scenario to explore when and how to involve different team members in primary care visits.

#### Author(s):

Gerri Lamb, PhD, RN, FAAN, College of Nursing & Health Innovation, Arizona State University

Kate Watkins, DNP, RN, CPNP, CNE, School of Nursing, College of Health and Human Services, Northern Arizona University

#### Link to Resource:

<http://links.asu.edu/pcm2>

#### Subject:

Caregivers

Collaborative Practice

Education & Learning



527



116



0



0

SHARE



Involving Team Members in Primary Care Practice

Feedback



The slide features a dark blue background with several colorful hexagons in shades of purple, green, cyan, red, and blue. A large central blue hexagon contains the word "Enter". Surrounding this central hexagon are smaller hexagons, some of which contain images of healthcare professionals in clinical settings. The title "Involving Team Members in Primary Care Practice" is displayed in white text at the top of the slide.

Enter



# Resource Center: Freely Available Institutional and Community Expertise

## RESOURCE CENTER

### What is Interprofessional Education?

Resource Type: Other 

This interactive eLearning module defines interprofessional education and describes its value to you in your practice. The module includes a case study and several interactive activities that highlight practical ways to recognize and optimize your teamwork experiences.

**Author(s):**

Gerri Lamb, PhD, RN, FAAN, College of Nursing & Health Innovation, Arizona State University

**Link to Resource:**

<http://links.asu.edu/fm1>

**Subject:**

Collaborative Practice  
Education & Learning  
Teamwork



540



104



0



0

SHARE



What is Interprofessional Education?

Feedback

### What is Interprofessional Education?



# Resource Center: Freely Available Institutional and Community Expertise

## Preceptors in the Nexus Toolkit



Submitted by National Center... on Sep 1, 2015 - 10:46pm CDT

Ready to transform your clinical site into an interprofessional collaborative care and training site?

### WHAT YOU'LL GET FROM THIS TOOLKIT

A wide array of tools that support and enrich interprofessional practice to enhance patient care, and professional development opportunities for clinical preceptors who facilitate interprofessional teams of learners. You can use any or all of the tools in a variety of settings- everything is customizable! The tools are available in a variety of formats:

- web-based modules for preceptor development.
- active-learning materials and facilitator guides for face-to-face workshops for preceptor development.
- interprofessional education materials to be used with learners to enhance their practice experiences.
- interprofessional collaborative practice materials and other resources being used across the country.

### WHO THIS TOOLKIT IS FOR

This toolkit will help preceptors in any healthcare profession who wish to precept interprofessional learners and/or champion interprofessional practice and education at their clinical site.

*Please note that a National Center user account is required to access the online modules.*

#### Preceptor as Learner ?

Online Modules	Group Learning Materials
An Introduction to Interprofessional Collaboration	Madness to Methods
interprofessional-practice-and-education	Best Practices
	Role Play Cards

13,874 80 0 7

SHARE

#### Preceptor as Learner ?

Online Modules	Group Learning Materials
An Introduction to Interprofessional Collaboration	Madness to Methods
Facilitating Interprofessional Discussions: Best Practices	Role Play Cards
Interprofessional Precepting: Best Practices	Objective Structured Teaching Experience (OSTE)
Enhancing Interprofessional Practice and Education at Your Site	Madness to Methods

#### Preceptor as Interprofessional Educator ?

Educational Tools
Interprofessional Crucial Conversations/Conflict Resolution
Interprofessional Agents of Change
Interprofessional Team Evaluation
Interprofessional Journal/Book Club
Interprofessional Pandora's Box
Interprofessional Standardized Patient Simulation
Interprofessional Quality Improvement
Interprofessional Debriefing Guides

#### Preceptor as Interprofessional Champion ?

Practice Transformation Tools
Interprofessional Group Visit and Home Visit Guides
National Models and Resources for Interprofessional Practice Transformation





# Resource Center: Freely Available Institutional and Community Expertise

## LATEST RESEARCH

The National Center is charged to produce information and evidence – through scholarly contributions and partnerships – about the use and effectiveness of interprofessional models from data gathered through participants in the Nexus Innovations Network and the National Center Data Repository (NCDR).

Below is a selected list of recent original publications and research:

Brandt, B.F., Schmitz, C. C. (2017) *The US National Center for Interprofessional Practice and Education Measurement and Assessment Collection*. *Journal of Interprofessional Care*, 00(0): 000-000. doi: 10.1080/13561820.2017.1286884

Lutfiyya, M.N., Tomai, L., Frogner, B., Cerra, F., Zismer, D., Parente, S. (2016) *Does primary care diabetes management provided to Medicare patients differ between primary care physicians and nurse practitioners?* *Journal of Advanced Nursing*, 00(0), 000-000. doi: 10.1111/jan.13108

Brandt, B. *The Formation and Development of the National Center for Interprofessional Practice and Education*. In: Forman, D; Jones, M; Thistlethwaite, J eds. *Leading Research and Evaluation in Interprofessional Education and Collaborative Practice*. United Kingdom: Palgrave Macmillan, 2016.

Little, MM; St. Hill, CA; Ware, KB; Swanoski, MT; Chapman, SA, Lutfiyya, MN; Cerra, FB (2016). *Team science as interprofessional collaborative research practice: a systematic review of the science of team science literature*. *Journal of Investigative Medicine*, 64:6.

Lutfiyya, NM; Tomai, L; Frogner, B; Cerra, FB; Zismer, D; Parente, S (2016). *Does Primary Care Diabetes Management Provided Medicare Patients Differ between Primary Care Physicians and Nurse Practitioners?* *Journal of Advanced Nursing*, e-pub ahead of print.

Cox, M; Cuff, P; Brandt, BF; Reeves, S; Zeirler, B (2016). *Measuring the impact of interprofessional education on collaborative practice and patient outcomes*. *Journal of Interprofessional Care*, 30:1, 1-3.

Hager, K; St. Hill, CA; Prunuske, J; Swanoski, M; Anderson, G; Lutfiyya, MN (2016). *Development of an interprofessional and interdisciplinary collaborative research practice for clinical faculty*. *Journal of Interprofessional Care*, 30:2, 265-267.

Lutfiyya, MN; Brandt, BF; Cerra, FB (2016). *Reflections From the Intersection of Health Professions Education and Clinical Practice: The State of the Science of Interprofessional Education and Collaborative Practice*. *Academic Medicine*, 91:6, 766-771.

Cerra, FB; Pacala, J; Brandt, BF; Lutfiyya, MN (2015). *The Application of Informatics in Delineating the Proof of Concept for Creating Knowledge of the Value Added by Interprofessional Practice and Education*. *Healthcare*, 3, 1158-1173.

Lutfiyya, M. N., Brandt, B., Delaney, C., Pechacek, J., & Cerra, F. (2015). *Setting a research agenda for interprofessional education and collaborative practice in the context of US health system reform*. *Journal of Interprofessional Care*, 1-8.



# National Center 2017 Learning Opportunities



## T3 Train-the-Trainer: Interprofessional Faculty Development Program

Preparing health professions faculty and collaborative practice clinicians from all professions to lead IPE efforts and promote team-based care. You'll have 3.5 days of in-person training heavily focused on experiential learning

April 19 - 22, University of Virginia  
August 14 - 17, University of Washington  
September 11 - 14, University of Missouri  
November 8 - 11, University of Virginia

## Nexus Summit 2017: Provocative Ideas for Practical IPE

Together we will explore emerging ideas, apply practical skills and learn from role models - focusing on:

- Affirming and Advancing our Commitment to Teams
- Resiliency and Well-Being
- Engaging Leaders in IPE

Minneapolis | August 20 - 23, 2017



## Preceptors in the Nexus: Interprofessional Learning IN Practice for Preceptors and Site Development

Two-day workshop focused on knowledge, skills, and behaviors for interprofessional learning in practice.

Minneapolis | June 1 - 2, 2017





## NATIONAL CENTER for INTERPROFESSIONAL PRACTICE and EDUCATION

<https://nexusipe.org>



<https://www.facebook.com/nexusipe>



<https://twitter.com/nexusipe>



<https://www.linkedin.com/company/6382596>