



APHA 142<sup>nd</sup>  
Annual Meeting & Expo  
November 19<sup>th</sup>, 2014

**Employing mobile technology for a  
collaborative neighborhood IPE project  
serving vulnerable populations**

**Nic Bookman, MPH**

# PRESENTER DISCLOSURE

The following personal financial relationships with commercial interests relevant to this presentation existed during the past 12 months:

Presenter: Nic Bookman, MPH

No relationships to disclose

# 1 | PROJECT OVERVIEW

1 | **PROJECT OVERVIEW**

2 | **CURRENT USAGE**

1 | **PROJECT OVERVIEW**

2 | **CURRENT USAGE**

3 | **LESSONS LEARNED**

1 | **PROJECT OVERVIEW**

2 | **CURRENT USAGE**

3 | **LESSONS LEARNED**

4 | **FUTURE POTENTIAL USAGE**

1 | **PROJECT OVERVIEW**

2 | **CURRENT USAGE**

3 | **LESSONS LEARNED**

4 | **FUTURE POTENTIAL USAGE**

5 | **CONCLUSIONS**

# 1 | PROJECT OVERVIEW

BACKGROUND

CARE COORDINATION

NEEDS ASSESSMENT

## 2 | CURRENT USAGE

## 3 | LESSONS LEARNED

## 4 | FUTURE POTENTIAL USAGE

## 5 | CONCLUSIONS



# BACKGROUND

## **Interprofessional Care Access Network**

# BACKGROUND

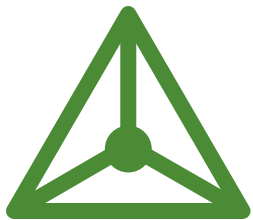
**Interprofessional Care Access Network**

**I-CAN**

# BACKGROUND

## Interprofessional Care Access Network

# I-CAN



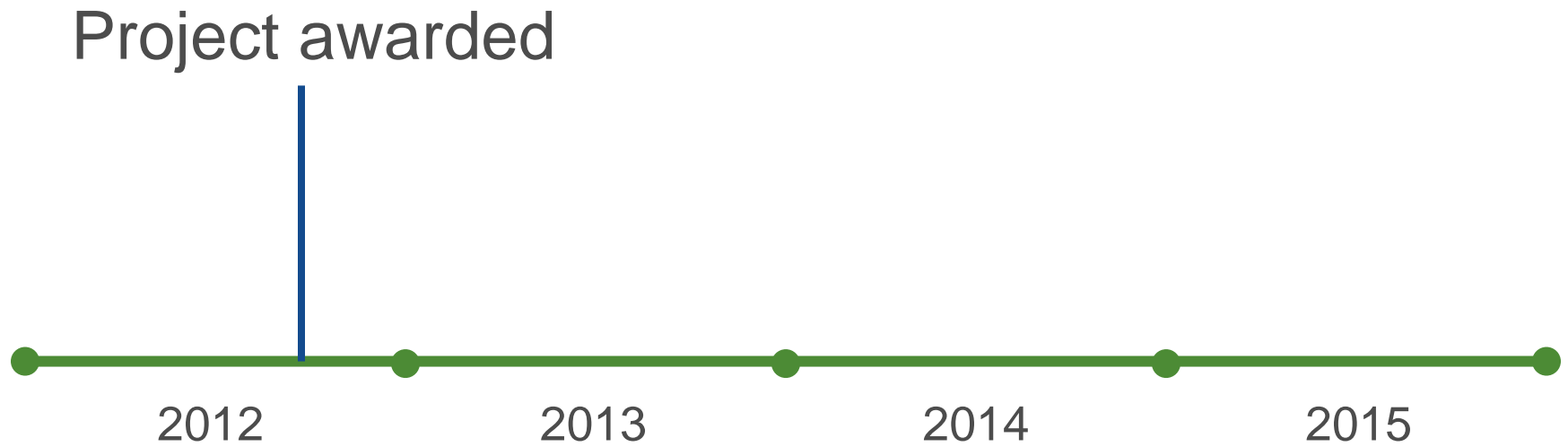
**Triple Aim**

**Better Care, Better Health, Lower Costs**

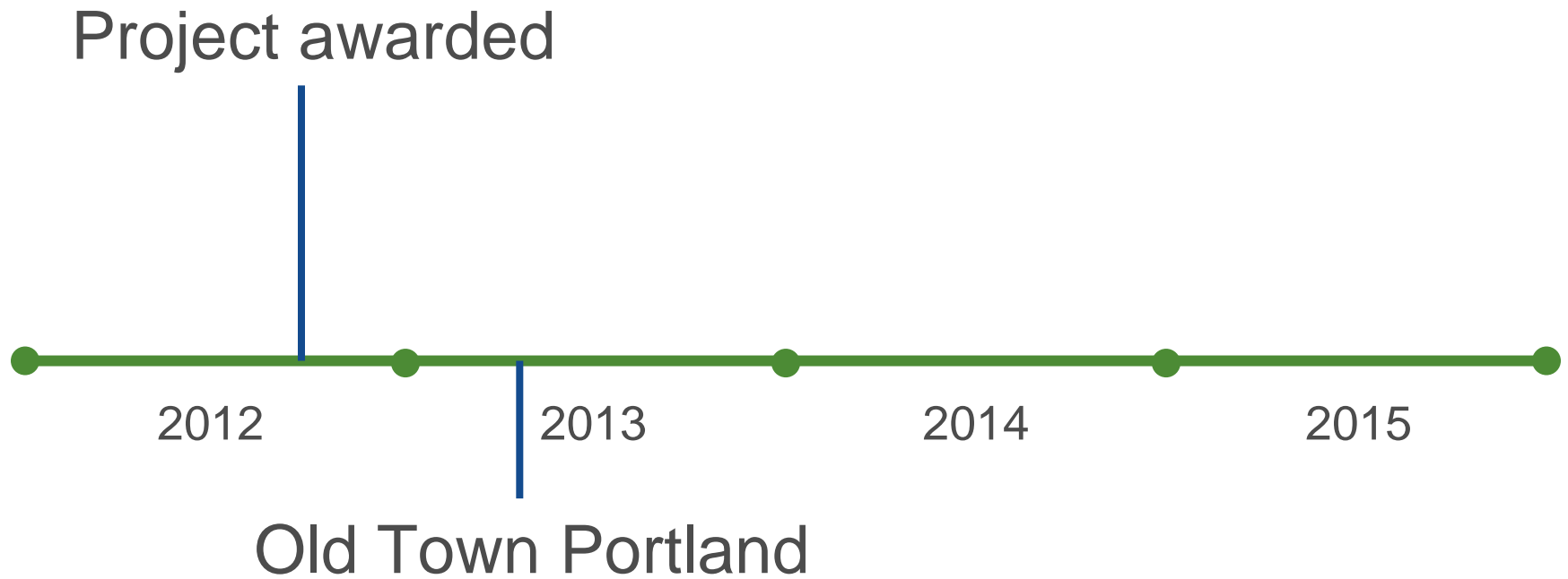
# BACKGROUND



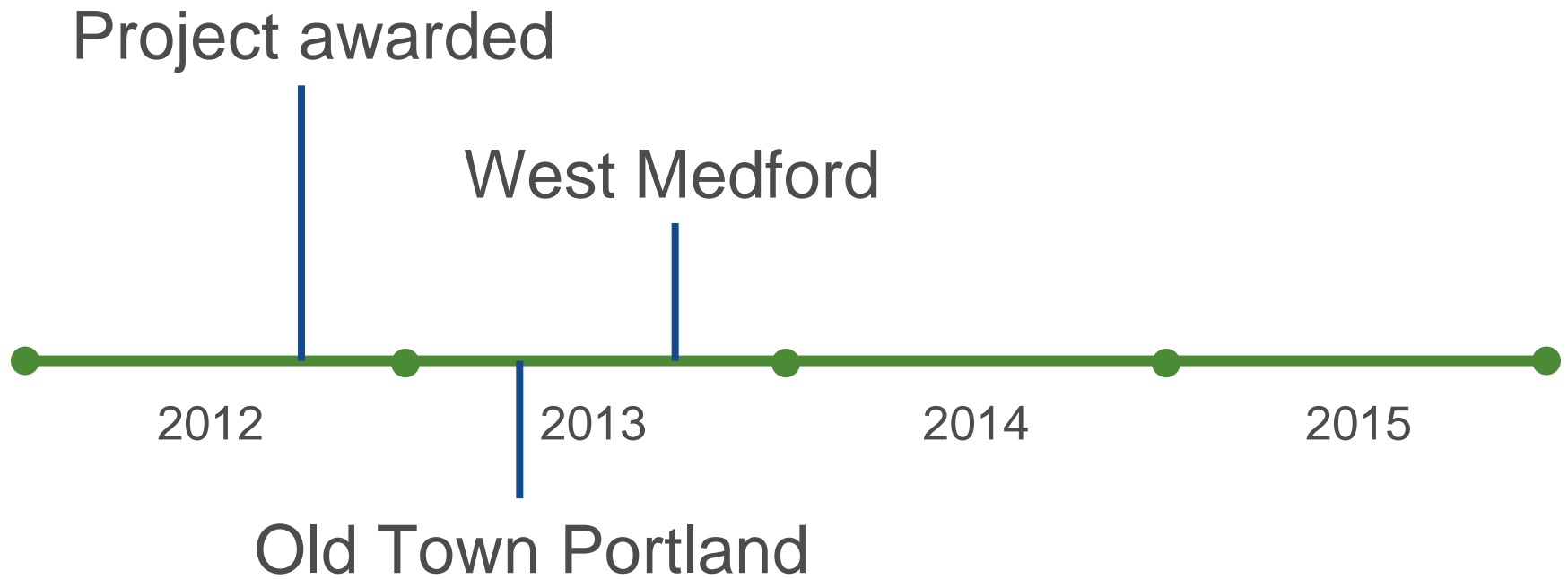
# BACKGROUND



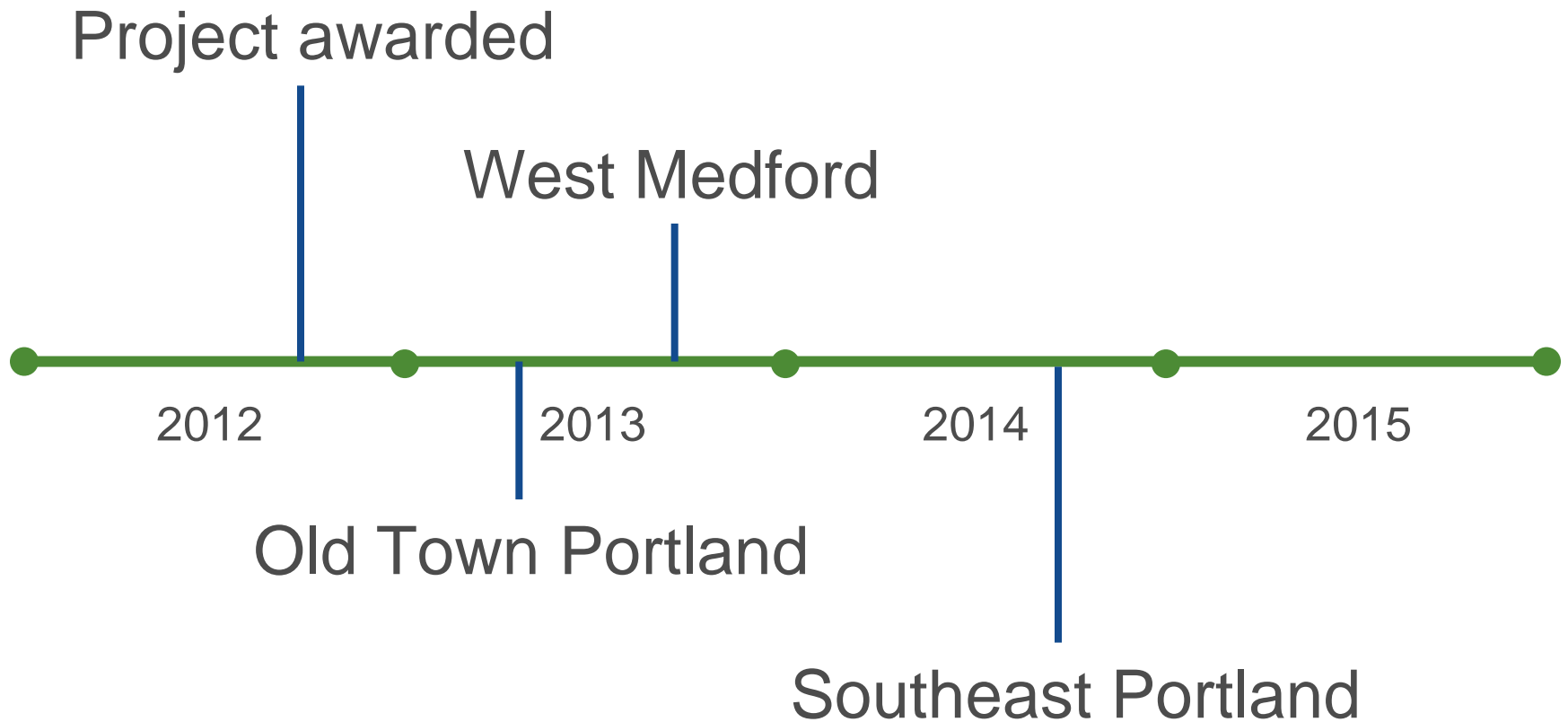
# BACKGROUND



# BACKGROUND

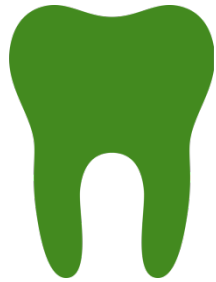


# BACKGROUND





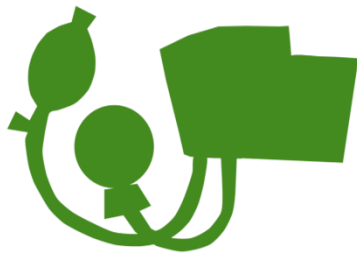
# BACKGROUND



Dentistry



Medicine



Nursing



Pharmacy

# BACKGROUND

# BACKGROUND



# BACKGROUND



# BACKGROUND



# BACKGROUND



# BACKGROUND



# BACKGROUND





# CARE COORDINATION



# NEEDS ASSESSMENT



- Homelessness
- Mobility issues
- Social isolation

# NEEDS ASSESSMENT

- Light and compact
- Built-in cellular network connectivity
- Encrypted
- Comparatively cheap



1 | PROJECT OVERVIEW

2 | CURRENT USAGE  
DATA COLLECTION & ACCESS  
LANGUAGE INTERPRETATION  
TELEHEALTH STUDENTS

3 | LESSONS LEARNED

4 | FUTURE POTENTIAL USAGE

5 | CONCLUSIONS



# DATA COLLECTION & ACCESS

iPad 10:07 AM 76%

## LIMITED PHYSICAL SCREENING

Blood pressure \_\_\_\_\_ Heart rate \_\_\_\_\_ Respiratory rate \_\_\_\_\_


Near vision \_\_\_\_\_ Distance vision \_\_\_\_\_ (Snellen)


Other vision \_\_\_\_\_

Missing teeth \_\_\_\_\_ Dentures/partials \_\_\_\_\_

Describe mucosa (color, swelling, other)

Dental score \_\_\_\_\_

 Table of Contents

Enter Fullscreen 

# LANGUAGE INTERPRETATION



# TELEHEATH STUDENTS





1 | PROJECT OVERVIEW

2 | CURRENT USAGE

3 | LESSONS LEARNED  
BENEFITS AND SUCCESSES  
OPERATIONAL CHALLENGES  
INTERPERSONAL CHALLENGES

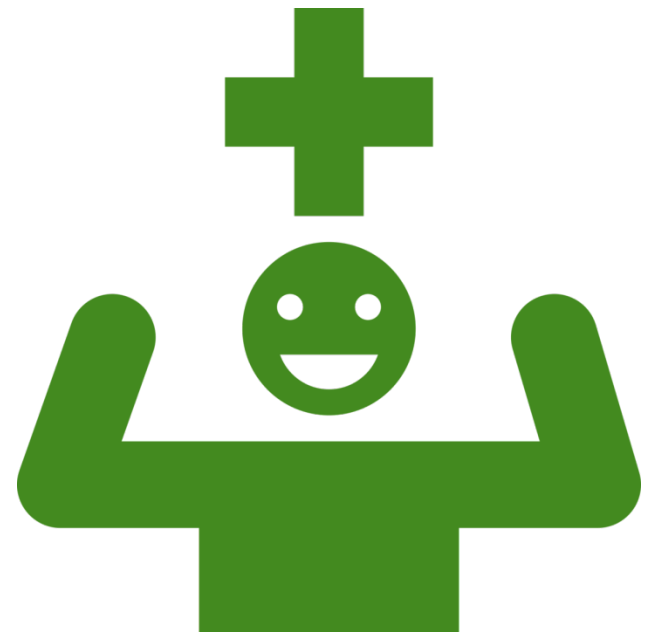
4 | FUTURE POTENTIAL USAGE

5 | CONCLUSIONS



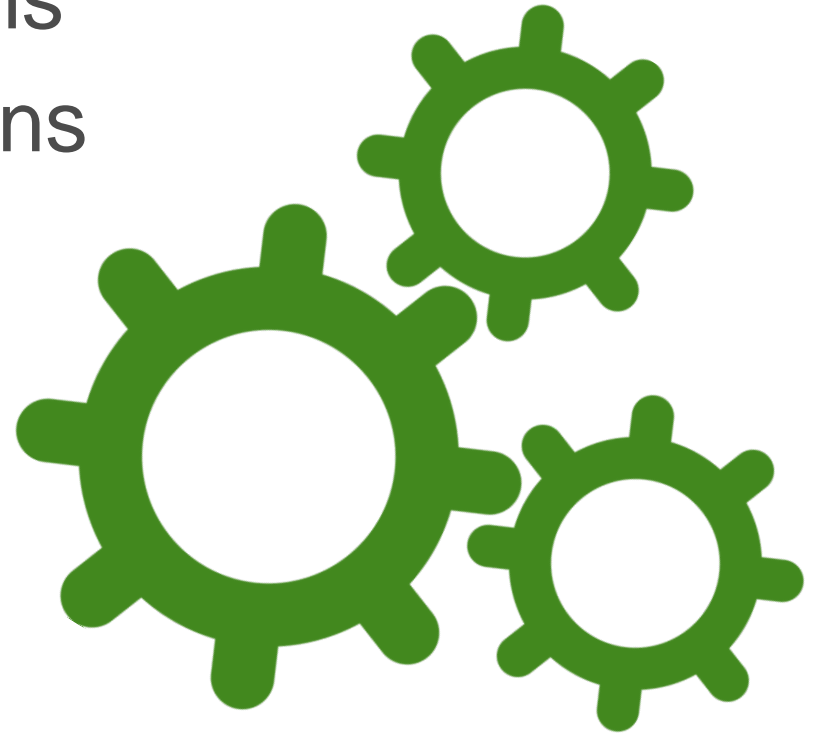
# BENEFITS AND SUCCESSES

- Real time data collection
- Remote data access
- Extended range
- Expanded teams



# OPERATIONAL CHALLENGES

- Structural limitations
- Technological limitations
- Organizational limitations



# INTERPERSONAL CHALLENGES

- Developer vs. user
- Variability of users
- User turnover



1 | **PROJECT OVERVIEW**

2 | **CURRENT USAGE**

3 | **LESSONS LEARNED**

4 | **FUTURE POTENTIAL USAGE**

**EMR/EHR INTEGRATION**

**SECURE COMMUNICATION**

**TELEHEALTH PROVIDERS**

5 | **CONCLUSIONS**

# EMR/EHR INTEGRATION



# SECURE COMMUNICATION





# TELEHEALTH PROVIDERS



1 | **PROJECT OVERVIEW**

2 | **CURRENT USAGE**

3 | **LESSONS LEARNED**

4 | **FUTURE POTENTIAL USAGE**

5 | **CONCLUSIONS**

**OVERCOMING CHALLENGES**

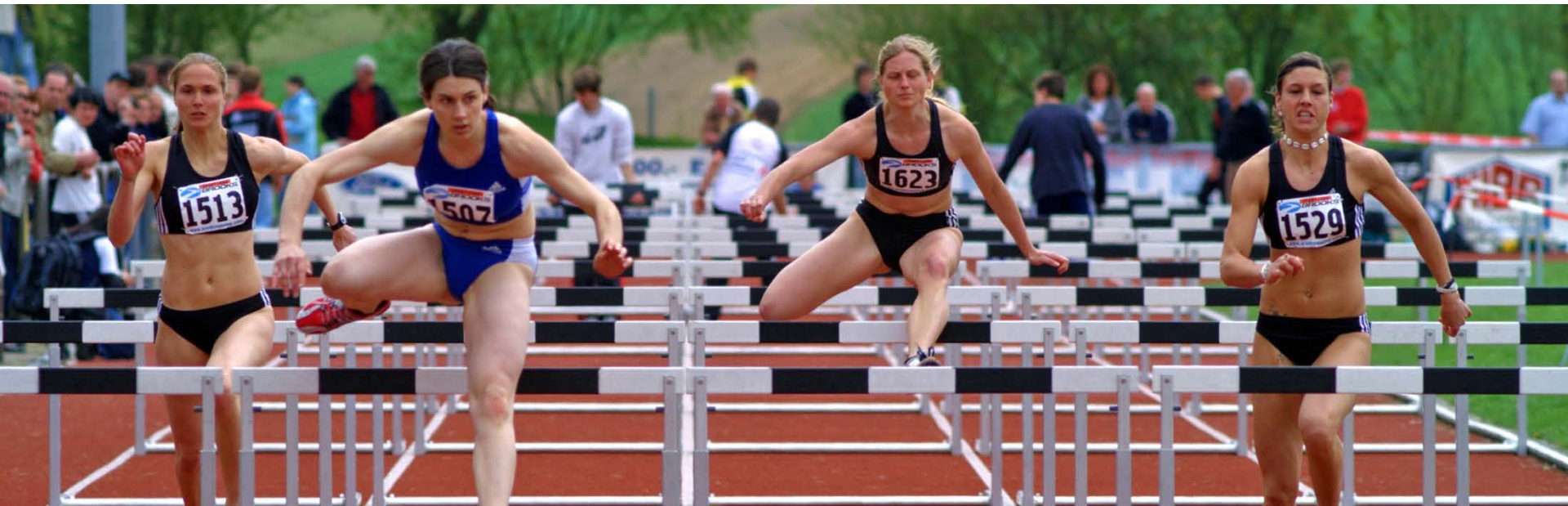
**KEEPING UP WITH TECHNOLOGY**

**KEEPING UP WITH HEALTH CARE**



# OVERCOMING CHALLENGES

- Identifying appropriate technologies
- New technologies create new solutions
- Growing user familiarity



# KEEPING UP WITH TECHNOLOGY

- Always advancing
- Difficult to track
- Inevitable



# KEEPING UP WITH HEALTH CARE

- Moving towards patient-centered care
- Moving towards team-based care
- Interprofessional
- Embracing technology



# MORE INFORMATION

 [www.ohsu.edu/i-can](http://www.ohsu.edu/i-can)       [ican@ohsu.edu](mailto:ican@ohsu.edu)

Faculty in Residence: Emerging Roles for Collaborative Academic Practice in Public Health Nursing.

**10:30 – 10:45, MCC 222**

Interprofessional Education in Public Health Nursing: A Neighborhood Clinical Experience Model.

**1:15 – 1:30, MCC 221**

# I-CAN TEAM

Nic Bookman, MPH

Jennifer Boyd, PhD, MBA

Katherine Bradley, PhD, RN

Meg Devoe, MD

Jill Mason, MPH, RDH, EPP

Launa Rae Mathews, MS, RN, COHN-S

Tanya Ostrogorsky, EdD

Juancho Ramirez, PharmD

Heather Voss, MSN, RN

Peggy Wros, PhD, RN

# DISCLAIMER

This project is supported by funds from the Bureau of Health Professions (BHP), Health Resources and Services Administration (HRSA), Department of Health and Human Services (DHHS) under grant number UD7HP25057 and title “Interprofessional Care Access Network” for \$1,485,394. This information or content and conclusions are those of the author and should not be construed as the official position or policy of, nor should any endorsements be inferred by the BHP, HRSA, DHHS or the U.S. Government.